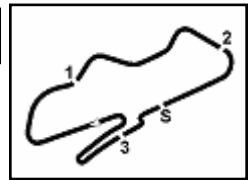


## Prosecco DOC UK Round, 2-4 July 2021

### Entry List

No.	Rider	Team	Bike	Class
1	<b>1 DAY</b> Josh (GBR)	Host-It.co.uk Racing Team	Ducati	
2	<b>2 NEVE</b> Craig (GBR)	CN Racing	Ducati	
3	<b>3 COX</b> Sam (GBR)	Sam Cox Racing	Ducati	
4	<b>4 MCGUINNESS</b> John (GBR)	Blue Earth Construction	Ducati	
5	<b>5 STEVENS</b> Matt (GBR)	Tech 5 Racing	Ducati	
6	<b>6 HASLER</b> Peter (GBR)	Art of Racing	Ducati	
7	<b>7 LONG</b> Mike (GBR)	True Heros Racing	Ducati	
8	<b>8 COMPTON</b> Andre (GBR)	Blue Earth Construction	Ducati	
9	<b>9 WALKER</b> Chris (GBR)	4T2 Racing	Ducati	
10	<b>11 FALLA</b> Ben (GBR)	True Heros Racing	Ducati	
11	<b>12 TAYLOR</b> Stephen (GBR)	STR Racing Team #2	Ducati	
12	<b>14 LOFTHOUSE</b> Max (GBR)	JDF Racing	Ducati	
13	<b>16 BUCHANAN</b> James (GBR)	VMGS Racing	Ducati	
14	<b>17 STEVENS</b> Carl (GBR)	Freeman Harris Solicitors Ducati	Ducati	
15	<b>18 SPENCER-FLEET</b> Richard (GBR)	RSF Racing / Army Motorcycle Road	Ducati	
16	<b>19 BASTABLE</b> Simon (GBR)	Simon Bastable Racing	Ducati	
17	<b>21 VENN</b> Matt (GBR)	Unique Motorsport	Ducati	
18	<b>22 TUNE</b> Ian (GBR)	TTS Assit Racing	Ducati	
19	<b>24 MCLAUGHLIN</b> Lee (GBR)	JSB Racing	Ducati	
20	<b>25 FLOWER</b> Matt (GBR)	My Ductwork Ducati Racing	Ducati	
21	<b>30 BOOTH</b> Andy (GBR)	ARBRacing.com	Ducati	
22	<b>31 BAINBRIDGE</b> Matt (GBR)	Marvel HCL Motorsport	Ducati	
23	<b>32 HUGHES</b> Arron (GBR)	Art of Racing	Ducati	
24	<b>33 QUAYLE</b> Iliam (GBR)	IQ Racing	Ducati	
25	<b>34 WATKINS</b> Christopher (GBR)	Arrow Racing	Ducati	
26	<b>36 POTTER</b> Ewan (GBR)	AH Performance	Ducati	
27	<b>40 BOUCHER</b> Daniel (GBR)	LBW Racing	Ducati	
28	<b>42 CURRIE</b> Craig (GBR)	4T2 Racing	Ducati	
29	<b>43 BULPIN</b> Seb (GBR)	Seb Bulpin Racing	Ducati	
30	<b>44 BEST</b> Edmund (GBR)	Symcirrus Motorsport	Ducati	
31	<b>45 STEVENS</b> Tom (GBR)	Tech 5 Racing	Ducati	
32	<b>49 SAVAGE</b> Oliver (GBR)	R Racing	Ducati	
33	<b>59 SOLERA</b> Alberto (GBR)	Highsparks	Ducati	
34	<b>64 TUSTIN</b> Michael (GBR)	AH Performance	Ducati	
35	<b>75 PINSON</b> Elliott (GBR)	Symcirrus Motorsport	Ducati	
36	<b>76 FOLEY</b> Jacque (IRL)	JF76 Racing	Ducati	
37	<b>86 SHOUBRIDGE</b> David (GBR)	Rich Energy Ducati	Ducati	
38	<b>87 FLETCHER</b> David (GBR)	Arrow Racing	Ducati	
39	<b>89 JONES</b> David (GBR)	Dragon Racing	Ducati	
40	<b>90 KENNELLY</b> Craig (GBR)	Resideo Racing	Ducati	
41	<b>92 JONES</b> Matthew (GBR)	Dragon Racing	Ducati	
42	<b>912 HAMBRO</b> Murray (GBR)	Legless Racing	Ducati	


**Prosecco DOC UK Round, 2-4 July 2021**
**Results Free Practice**

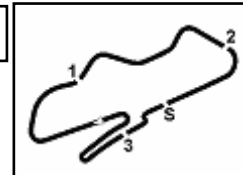
No.	Rider	Nat	Team	Bike	Time	Gap	Rel.	Laps
1	<b>1 DAY</b> Josh	GBR	Host-It.co.uk Racing Team	Ducati	<b>1'35.482</b>			12
2	<b>75 PINSON</b> Elliott	GBR	Symcirus Motorsport	Ducati	<b>1'35.869</b>	0.387	0.387	12
3	<b>43 BULPIN</b> Seb	GBR	Seb Bulpin Racing	Ducati	<b>1'36.143</b>	0.661	0.274	13
4	<b>9 WALKER</b> Chris	GBR	4T2 Racing	Ducati	<b>1'36.367</b>	0.885	0.224	11
5	<b>2 NEVE</b> Craig	GBR	CN Racing	Ducati	<b>1'36.383</b>	0.901	0.016	13
6	<b>89 JONES</b> David	GBR	Dragon Racing	Ducati	<b>1'36.401</b>	0.919	0.018	11
7	<b>4 MCGUINNESS</b> John	GBR	Blue Earth Construction	Ducati	<b>1'36.995</b>	1.513	0.594	12
8	<b>44 BEST</b> Edmund	GBR	Symcirus Motorsport	Ducati	<b>1'37.575</b>	2.093	0.580	12
9	<b>3 COX</b> Sam	GBR	Sam Cox Racing	Ducati	<b>1'38.001</b>	2.519	0.426	14
10	<b>86 SHOUBRIDGE</b> David	GBR	Rich Energy Ducati	Ducati	<b>1'38.089</b>	2.607	0.088	6
11	<b>40 BOUCHER</b> Daniel	GBR	LBW Racing	Ducati	<b>1'38.254</b>	2.772	0.165	13
12	<b>17 STEVENS</b> Carl	GBR	Freeman Harris Solicitors Ducati	Ducati	<b>1'38.392</b>	2.910	0.138	12
13	<b>42 CURRIE</b> Craig	GBR	4T2 Racing	Ducati	<b>1'38.505</b>	3.023	0.113	14
14	<b>64 TUSTIN</b> Michael	GBR	AH Performance	Ducati	<b>1'38.566</b>	3.084	0.061	13
15	<b>24 MCLAUGHLIN</b> Lee	GBR	JSB Racing	Ducati	<b>1'39.127</b>	3.645	0.561	13
16	<b>59 SOLERA</b> Alberto	GBR	Highsparks	Ducati	<b>1'39.487</b>	4.005	0.360	7
17	<b>33 QUAYLE</b> Iliam	GBR	IQ Racing	Ducati	<b>1'39.896</b>	4.414	0.409	14
18	<b>18 SPENCER-FLEET</b> Richard	GBR	RSF Racing / Army Motorcycle Road	Ducati	<b>1'39.940</b>	4.458	0.044	10
19	<b>49 SAVAGE</b> Oliver	GBR	R Racing	Ducati	<b>1'40.099</b>	4.617	0.159	13
20	<b>92 JONES</b> Matthew	GBR	Dragon Racing	Ducati	<b>1'40.102</b>	4.620	0.003	12
21	<b>14 LOFTHOUSE</b> Max	GBR	JDF Racing	Ducati	<b>1'40.450</b>	4.968	0.348	12
22	<b>6 HASLER</b> Peter	GBR	Art of Racing	Ducati	<b>1'40.489</b>	5.007	0.039	14
23	<b>90 KENNELLY</b> Craig	GBR	Resideo Racing	Ducati	<b>1'40.974</b>	5.492	0.485	13
24	<b>5 STEVENS</b> Matt	GBR	Tech 5 Racing	Ducati	<b>1'41.043</b>	5.561	0.069	12
25	<b>36 POTTER</b> Ewan	GBR	AH Performance	Ducati	<b>1'41.066</b>	5.584	0.023	11
26	<b>8 COMPTON</b> Andre	GBR	Blue Earth Construction	Ducati	<b>1'41.112</b>	5.630	0.046	11
27	<b>32 HUGHES</b> Arron	GBR	Art of Racing	Ducati	<b>1'41.703</b>	6.221	0.591	10
28	<b>16 BUCHANAN</b> James	GBR	VMGS Racing	Ducati	<b>1'41.794</b>	6.312	0.091	7
29	<b>31 BAINBRIDGE</b> Matt	GBR	Marvel HCL Motorsport	Ducati	<b>1'42.090</b>	6.608	0.296	10
30	<b>12 TAYLOR</b> Stephen	GBR	STR Racing Team #2	Ducati	<b>1'42.113</b>	6.631	0.023	10
31	<b>19 BASTABLE</b> Simon	GBR	Simon Bastable Racing	Ducati	<b>1'42.626</b>	7.144	0.513	11
32	<b>21 VENN</b> Matt	GBR	Unique Motorsport	Ducati	<b>1'42.918</b>	7.436	0.292	10
33	<b>45 STEVENS</b> Tom	GBR	Tech 5 Racing	Ducati	<b>1'43.022</b>	7.540	0.104	12
34	<b>11 FALLA</b> Ben	GBR	True Heros Racing	Ducati	<b>1'43.319</b>	7.837	0.297	7
35	<b>30 BOOTH</b> Andy	GBR	ARBRacing.com	Ducati	<b>1'44.980</b>	9.498	1.661	13
36	<b>7 LONG</b> Mike	GBR	True Heros Racing	Ducati	<b>1'45.625</b>	10.143	0.645	5
37	<b>912 HAMBRO</b> Murray	GBR	Legless Racing	Ducati	<b>1'45.756</b>	10.274	0.131	11
38	<b>25 FLOWER</b> Matt	GBR	My Ductwork Ducati Racing	Ducati	<b>1'46.057</b>	10.575	0.301	12
39	<b>87 FLETCHER</b> David	GBR	Arrow Racing	Ducati	<b>1'46.241</b>	10.759	0.184	12
40	<b>22 TUNE</b> Ian	GBR	TTS Assit Racing	Ducati	<b>1'46.901</b>	11.419	0.660	4
41	<b>34 WATKINS</b> Christopher	GBR	Arrow Racing	Ducati	<b>1'47.025</b>	11.543	0.124	8
42	<b>76 FOLEY</b> Jacque	IRL	JF76 Racing	Ducati				0

Qualifying Lap Time (110% of 1'35.482): 1'45.031

Humidity:	73%	AIR	18°C
Condition:	Dry	Temp:	29°C

 Start 02/07/2021 12:05  
 End 12:32

The results are provisional until the end of the time limit for protests and appeals and the completion of the technical checks.



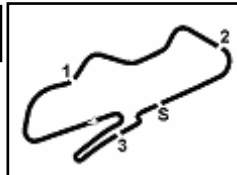
Donington Park 4.023 m

1 / 2

**Prosecco DOC UK Round, 2-4 July 2021**
**Top Speeds Free Practice**

BEST LAP			
1	1 DAY Josh	Ducati	1'35.482
2	75 PINSON Elliott	Ducati	1'35.869
3	43 BULPIN Seb	Ducati	1'36.143
4	9 WALKER Chris	Ducati	1'36.367
5	2 NEVE Craig	Ducati	1'36.383
6	89 JONES David	Ducati	1'36.401
7	4 MCGUINNESS John	Ducati	1'36.995
8	44 BEST Edmund	Ducati	1'37.575
9	3 COX Sam	Ducati	1'38.001
10	86 SHOUBRIDGE David	Ducati	1'38.089
11	40 BOUCHER Daniel	Ducati	1'38.254
12	17 STEVENS Carl	Ducati	1'38.392
13	42 CURRIE Craig	Ducati	1'38.505
14	64 TUSTIN Michael	Ducati	1'38.566
15	24 MCLAUGHLIN Lee	Ducati	1'39.127
16	59 SOLERA Alberto	Ducati	1'39.487
17	33 QUAYLE Iliam	Ducati	1'39.896
18	18 SPENCER-FLEET Richard	Ducati	1'39.940
19	49 SAVAGE Oliver	Ducati	1'40.099
20	92 JONES Matthew	Ducati	1'40.102
21	14 LOFTHOUSE Max	Ducati	1'40.450
22	6 HASLER Peter	Ducati	1'40.489
23	90 KENNELLY Craig	Ducati	1'40.974
24	5 STEVENS Matt	Ducati	1'41.043
25	36 POTTER Ewan	Ducati	1'41.066
26	8 COMPTON Andre	Ducati	1'41.112
27	32 HUGHES Arron	Ducati	1'41.703
28	16 BUCHANAN James	Ducati	1'41.794
29	31 BAINBRIDGE Matt	Ducati	1'42.090
30	12 TAYLOR Stephen	Ducati	1'42.113
31	19 BASTABLE Simon	Ducati	1'42.626
32	21 VENN Matt	Ducati	1'42.918
33	45 STEVENS Tom	Ducati	1'43.022
34	11 FALLA Ben	Ducati	1'43.319
35	30 BOOTH Andy	Ducati	1'44.980
36	7 LONG Mike	Ducati	1'45.625
37	912 HAMBRO Murray	Ducati	1'45.756
38	25 FLOWER Matt	Ducati	1'46.057
39	87 FLETCHER David	Ducati	1'46.241
40	22 TUNE Ian	Ducati	1'46.901
41	34 WATKINS Christopher	Ducati	1'47.025
42	76 FOLEY Jacque	Ducati	

SPEED			
1	1 DAY Josh	Ducati	243,4
2	59 SOLERA Alberto	Ducati	240,7
3	12 TAYLOR Stephen	Ducati	240,7
4	89 JONES David	Ducati	239,1
5	17 STEVENS Carl	Ducati	239,1
6	9 WALKER Chris	Ducati	238,5
7	75 PINSON Elliott	Ducati	238,0
8	44 BEST Edmund	Ducati	238,0
9	33 QUAYLE Iliam	Ducati	238,0
10	36 POTTER Ewan	Ducati	237,5
11	49 SAVAGE Oliver	Ducati	237,0
12	6 HASLER Peter	Ducati	236,4
13	40 BOUCHER Daniel	Ducati	235,9
14	3 COX Sam	Ducati	235,4
15	8 COMPTON Andre	Ducati	235,4
16	32 HUGHES Arron	Ducati	235,4
17	43 BULPIN Seb	Ducati	235,4
18	42 CURRIE Craig	Ducati	235,4
19	4 MCGUINNESS John	Ducati	234,9
20	92 JONES Matthew	Ducati	234,9
21	64 TUSTIN Michael	Ducati	234,4
22	2 NEVE Craig	Ducati	234,4
23	18 SPENCER-FLEET Richard	Ducati	234,4
24	5 STEVENS Matt	Ducati	233,9
25	11 FALLA Ben	Ducati	233,4
26	86 SHOUBRIDGE David	Ducati	233,4
27	90 KENNELLY Craig	Ducati	231,4
28	14 LOFTHOUSE Max	Ducati	230,4
29	25 FLOWER Matt	Ducati	229,4
30	19 BASTABLE Simon	Ducati	228,4
31	16 BUCHANAN James	Ducati	228,4
32	7 LONG Mike	Ducati	228,4
33	45 STEVENS Tom	Ducati	227,9
34	24 MCLAUGHLIN Lee	Ducati	227,9
35	31 BAINBRIDGE Matt	Ducati	227,9
36	21 VENN Matt	Ducati	227,5
37	87 FLETCHER David	Ducati	226,0
38	30 BOOTH Andy	Ducati	225,1
39	22 TUNE Ian	Ducati	220,0
40	912 HAMBRO Murray	Ducati	215,6
41	34 WATKINS Christopher	Ducati	211,8



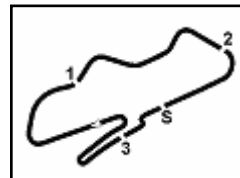
# Prosecco DOC UK Round, 2-4 July 2021

## Top Speeds Free Practice

Donington Park 4.023 m

2 / 2

SEG. 1			SEG. 2			SEG. 3			SEG. 4						
1	1	DAY Josh	20.375	1	75	PINSON Elliott	25.856	1	75	PINSON Elliott	23.777	1	1	DAY Josh	24.924
2	75	PINSON Elliott	20.377	2	1	DAY Josh	25.918	2	1	DAY Josh	24.037	2	75	PINSON Elliott	25.090
3	89	JONES David	20.558	3	43	BULPIN Seb	26.108	3	43	BULPIN Seb	24.127	3	2	NEVE Craig	25.166
4	43	BULPIN Seb	20.569	4	9	WALKER Chris	26.119	4	2	NEVE Craig	24.225	4	43	BULPIN Seb	25.166
5	2	NEVE Craig	20.571	5	2	NEVE Craig	26.211	5	44	BEST Edmund	24.256	5	89	JONES David	25.168
6	9	WALKER Chris	20.628	6	89	JONES David	26.361	6	89	JONES David	24.311	6	9	WALKER Chris	25.212
7	4	MCGUINNESS John	20.791	7	4	MCGUINNESS John	26.384	7	9	WALKER Chris	24.352	7	4	MCGUINNESS John	25.369
8	44	BEST Edmund	20.856	8	40	BOUCHER Daniel	26.432	8	4	MCGUINNESS John	24.374	8	42	CURRIE Craig	25.458
9	86	SHOUBRIDGE David	20.864	9	44	BEST Edmund	26.443	9	86	SHOUBRIDGE David	24.509	9	3	COX Sam	25.469
10	64	TUSTIN Michael	20.869	10	3	COX Sam	26.679	10	59	SOLERA Alberto	24.528	10	44	BEST Edmund	25.613
11	3	COX Sam	20.889	11	86	SHOUBRIDGE David	26.769	11	3	COX Sam	24.673	11	17	STEVENS Carl	25.709
12	17	STEVENS Carl	21.062	12	64	TUSTIN Michael	26.803	12	17	STEVENS Carl	24.692	12	40	BOUCHER Daniel	25.714
13	40	BOUCHER Daniel	21.172	13	17	STEVENS Carl	26.842	13	33	QUAYLE Iliam	24.715	13	64	TUSTIN Michael	25.824
14	59	SOLERA Alberto	21.199	14	42	CURRIE Craig	26.898	14	64	TUSTIN Michael	24.755	14	24	MCLAUGHLIN Lee	25.934
15	42	CURRIE Craig	21.201	15	18	SPENCER-FLEET Richa	26.909	15	40	BOUCHER Daniel	24.793	15	36	POTTER Ewan	26.036
16	24	MCLAUGHLIN Lee	21.238	16	24	MCLAUGHLIN Lee	26.962	16	24	MCLAUGHLIN Lee	24.824	16	18	SPENCER-FLEET Richa	26.051
17	49	SAVAGE Oliver	21.260	17	33	QUAYLE Iliam	26.985	17	42	CURRIE Craig	24.830	17	6	HASLER Peter	26.099
18	33	QUAYLE Iliam	21.281	18	14	LOFTHOUSE Max	27.097	18	49	SAVAGE Oliver	24.904	18	59	SOLERA Alberto	26.169
19	92	JONES Matthew	21.327	19	59	SOLERA Alberto	27.249	19	92	JONES Matthew	24.918	19	33	QUAYLE Iliam	26.205
20	8	COMPTON Andre	21.361	20	49	SAVAGE Oliver	27.259	20	18	SPENCER-FLEET Richa	24.996	20	92	JONES Matthew	26.230
21	6	HASLER Peter	21.365	21	6	HASLER Peter	27.269	21	6	HASLER Peter	25.014	21	45	STEVENS Tom	26.282
22	12	TAYLOR Stephen	21.431	22	92	JONES Matthew	27.460	22	14	LOFTHOUSE Max	25.021	22	90	KENNELLY Craig	26.287
23	18	SPENCER-FLEET Richa	21.436	23	32	HUGHES Arron	27.491	23	5	STEVENS Matt	25.082	23	5	STEVENS Matt	26.292
24	5	STEVENS Matt	21.485	24	12	TAYLOR Stephen	27.578	24	12	TAYLOR Stephen	25.094	24	16	BUCHANAN James	26.312
25	36	POTTER Ewan	21.629	25	90	KENNELLY Craig	27.642	25	16	BUCHANAN James	25.111	25	49	SAVAGE Oliver	26.344
26	90	KENNELLY Craig	21.632	26	21	VENN Matt	27.642	26	90	KENNELLY Craig	25.175	26	8	COMPTON Andre	26.346
27	19	BASTABLE Simon	21.680	27	8	COMPTON Andre	27.642	27	8	COMPTON Andre	25.314	27	14	LOFTHOUSE Max	26.508
28	32	HUGHES Arron	21.686	28	5	STEVENS Matt	27.700	28	32	HUGHES Arron	25.341	28	11	FALLA Ben	26.534
29	14	LOFTHOUSE Max	21.738	29	16	BUCHANAN James	27.780	29	11	FALLA Ben	25.442	29	32	HUGHES Arron	26.612
30	31	BAINBRIDGE Matt	21.752	30	11	FALLA Ben	27.804	30	36	POTTER Ewan	25.457	30	31	BAINBRIDGE Matt	26.656
31	21	VENN Matt	21.753	31	36	POTTER Ewan	27.852	31	45	STEVENS Tom	25.504	31	12	TAYLOR Stephen	26.824
32	45	STEVENS Tom	21.946	32	19	BASTABLE Simon	27.896	32	31	BAINBRIDGE Matt	25.607	32	86	SHOUBRIDGE David	26.932
33	11	FALLA Ben	22.093	33	31	BAINBRIDGE Matt	27.968	33	21	VENN Matt	25.631	33	19	BASTABLE Simon	26.960
34	30	BOOTH Andy	22.258	34	45	STEVENS Tom	28.165	34	19	BASTABLE Simon	25.698	34	30	BOOTH Andy	27.163
35	16	BUCHANAN James	22.317	35	7	LONG Mike	28.503	35	25	FLOWER Matt	25.879	35	21	VENN Matt	27.204
36	7	LONG Mike	22.537	36	912	HAMBRO Murray	28.725	36	30	BOOTH Andy	25.942	36	25	FLOWER Matt	27.373
37	912	HAMBRO Murray	22.567	37	30	BOOTH Andy	28.791	37	22	TUNE Ian	26.338	37	912	HAMBRO Murray	27.714
38	87	FLETCHER David	22.590	38	34	WATKINS Christopher	28.829	38	87	FLETCHER David	26.349	38	87	FLETCHER David	27.813
39	25	FLOWER Matt	22.633	39	87	FLETCHER David	29.245	39	7	LONG Mike	26.510	39	7	LONG Mike	27.885
40	22	TUNE Ian	22.818	40	22	TUNE Ian	29.354	40	912	HAMBRO Murray	26.535	40	22	TUNE Ian	28.391
41	34	WATKINS Christopher	22.832	41	25	FLOWER Matt	29.457	41	34	WATKINS Christopher	26.619	41	34	WATKINS Christopher	28.721



## Prosecco DOC UK Round, 2-4 July 2021

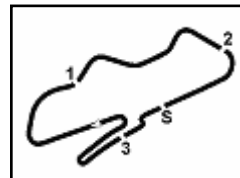
### Ideal Times Free Practice

Donington Park 4.023 m

1 / 2

No.	Rider	Bike	Seg. 1	Seg. 2	Seg. 3	Seg. 4	Ideal Time		
			Diff. 1	Diff. 2	Diff. 3	Diff. 4	Best Lap	Pos.	Diff.
1	<b>75 PINSON E.</b> (GBR)	Ducati	20.377 +0.363	25.856 +0.235	23.777	25.090 +0.171	<b>1'35.100</b> 1'35.869	2	0.769
2	<b>1 DAY J.</b> (GBR)	Ducati	20.375 +0.088	25.918 +0.034	24.037 +0.089	24.924 +0.017	<b>1'35.254</b> 1'35.482	1	0.228
3	<b>43 BULPIN S.</b> (GBR)	Ducati	20.569 +0.113	26.108	24.127 +0.060	25.166	<b>1'35.970</b> 1'36.143	3	0.173
4	<b>2 NEVE C.</b> (GBR)	Ducati	20.571	26.211 +0.154	24.225	25.166 +0.056	<b>1'36.173</b> 1'36.383	5	0.210
5	<b>9 WALKER C.</b> (GBR)	Ducati	20.628 +0.014	26.119	24.352 +0.042	25.212	<b>1'36.311</b> 1'36.367	4	0.056
6	<b>89 JONES D.</b> (GBR)	Ducati	20.558	26.361	24.311 +0.003	25.168	<b>1'36.398</b> 1'36.401	6	0.003
7	<b>4 MCGUINNESS J.</b> (GBR)	Ducati	20.791 +0.077	26.384	24.374	25.369	<b>1'36.918</b> 1'36.995	7	0.077
8	<b>44 BEST E.</b> (GBR)	Ducati	20.856 +0.116	26.443 +0.291	24.256	25.613	<b>1'37.168</b> 1'37.575	8	0.407
9	<b>3 COX S.</b> (GBR)	Ducati	20.889	26.679 +0.030	24.673 +0.261	25.469	<b>1'37.710</b> 1'38.001	9	0.291
10	<b>40 BOUCHER D.</b> (GBR)	Ducati	21.172	26.432	24.793 +0.115	25.714 +0.028	<b>1'38.111</b> 1'38.254	11	0.143
11	<b>64 TUSTIN M.</b> (GBR)	Ducati	20.869	26.803 +0.055	24.755	25.824 +0.260	<b>1'38.251</b> 1'38.566	14	0.315
12	<b>17 STEVENS C.</b> (GBR)	Ducati	21.062 +0.014	26.842	24.692 +0.073	25.709	<b>1'38.305</b> 1'38.392	12	0.087
13	<b>42 CURRIE C.</b> (GBR)	Ducati	21.201 +0.076	26.898	24.830	25.458 +0.042	<b>1'38.387</b> 1'38.505	13	0.118
14	<b>24 MCLAUGHLIN L.</b> (GBR)	Ducati	21.238	26.962 +0.070	24.824 +0.099	25.934	<b>1'38.958</b> 1'39.127	15	0.169
15	<b>59 SOLERA A.</b> (GBR)	Ducati	21.199 +0.029	27.249 +0.231	24.528 +0.068	26.169 +0.014	<b>1'39.145</b> 1'39.487	16	0.342
16	<b>33 QUAYLE I.</b> (GBR)	Ducati	21.281 +0.135	26.985 +0.484	24.715 +0.032	26.205 +0.059	<b>1'39.186</b> 1'39.896	17	0.710
17	<b>18 SPENCER-FLEET R.</b> (G)	Ducati	21.436 +0.177	26.909	24.996 +0.232	26.051 +0.139	<b>1'39.392</b> 1'39.940	18	0.548
18	<b>6 HASLER P.</b> (GBR)	Ducati	21.365 +0.285	27.269 +0.344	25.014 +0.113	26.099	<b>1'39.747</b> 1'40.489	22	0.742
19	<b>49 SAVAGE O.</b> (GBR)	Ducati	21.260 +0.118	27.259	24.904	26.344 +0.214	<b>1'39.767</b> 1'40.099	19	0.332
20	<b>92 JONES M.</b> (GBR)	Ducati	21.327	27.460	24.918 +0.167	26.230	<b>1'39.935</b> 1'40.102	20	0.167
21	<b>14 LOFTHOUSE M.</b> (GBR)	Ducati	21.738	27.097	25.021	26.508 +0.086	<b>1'40.364</b> 1'40.450	21	0.086
22	<b>5 STEVENS M.</b> (GBR)	Ducati	21.485 +0.063	27.700 +0.382	25.082 +0.039	26.292	<b>1'40.559</b> 1'41.043	24	0.484
23	<b>8 COMPTON A.</b> (GBR)	Ducati	21.361 +0.028	27.642	25.314 +0.263	26.346 +0.158	<b>1'40.663</b> 1'41.112	26	0.449
24	<b>90 KENNELLY C.</b> (GBR)	Ducati	21.632 +0.141	27.642 +0.031	25.175 +0.066	26.287	<b>1'40.736</b> 1'40.974	23	0.238
25	<b>12 TAYLOR S.</b> (GBR)	Ducati	21.431 +0.446	27.578 +0.374	25.094 +0.077	26.824 +0.289	<b>1'40.927</b> 1'42.113	30	1.186
26	<b>36 POTTER E.</b> (GBR)	Ducati	21.629	27.852	25.457 +0.092	26.036	<b>1'40.974</b> 1'41.066	25	0.092
27	<b>32 HUGHES A.</b> (GBR)	Ducati	21.686 +0.028	27.491 +0.466	25.341 +0.079	26.612	<b>1'41.130</b> 1'41.703	27	0.573
28	<b>16 BUCHANAN J.</b> (GBR)	Ducati	22.317 +0.201	27.780 +0.073	25.111	26.312	<b>1'41.520</b> 1'41.794	28	0.274
29	<b>11 FALLA B.</b> (GBR)	Ducati	22.093 +0.386	27.804 +0.358	25.442 +0.198	26.534 +0.504	<b>1'41.873</b> 1'43.319	34	1.446
30	<b>45 STEVENS T.</b> (GBR)	Ducati	21.946 +0.384	28.165	25.504 +0.028	26.282 +0.713	<b>1'41.897</b> 1'43.022	33	1.125
31	<b>31 BAINBRIDGE M.</b> (GBR)	Ducati	21.752	27.968 +0.079	25.607 +0.028	26.656	<b>1'41.983</b> 1'42.090	29	0.107
32	<b>21 VENN M.</b> (GBR)	Ducati	21.753 +0.037	27.642	25.631 +0.338	27.204 +0.313	<b>1'42.230</b> 1'42.918	32	0.688
33	<b>19 BASTABLE S.</b> (GBR)	Ducati	21.680 +0.204	27.896	25.698 +0.188	26.960	<b>1'42.234</b> 1'42.626	31	0.392

02/07/2021



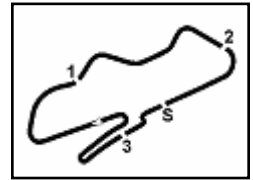
**Prosecco DOC UK Round, 2-4 July 2021**

**Ideal Times Free Practice**

Donington Park 4.023 m

2 / 2

No.	Rider	Bike	Seg. 1	Seg. 2	Seg. 3	Seg. 4	Ideal Time			
			Diff. 1	Diff. 2	Diff. 3	Diff. 4	Best Lap	Pos.	Diff.	
34	<b>30</b> BOOTH A. (GBR)	Ducati	22.258	28.791 +0.057	25.942 +0.303	27.163 +0.466	<b>1'44.154</b>			
35	<b>25</b> FLOWER M. (GBR)	Ducati	22.633 +0.242	29.457 +0.473	25.879	27.373	<b>1'45.342</b>	35	0.826	
36	<b>7</b> LONG M. (GBR)	Ducati	22.537	28.503 +0.164	26.510	27.885 +0.026	<b>1'45.435</b>	38	0.715	
37	<b>912</b> HAMBRO M. (GBR)	Ducati	22.567 +0.215	28.725	26.535	27.714	<b>1'45.541</b>	36	0.190	
38	<b>87</b> FLETCHER D. (GBR)	Ducati	22.590 +0.210	29.245	26.349	27.813 +0.034	<b>1'45.997</b>	37	0.215	
39	<b>22</b> TUNE I. (GBR)	Ducati	22.818	29.354	26.338	28.391	<b>1'46.901</b>	39	0.244	
40	<b>34</b> WATKINS C. (GBR)	Ducati	22.832	28.829	26.619	28.721 +0.024	<b>1'46.901</b>	40		
	<b>76</b> FOLEY J. (IRL)	Ducati					<b>1'47.001</b>	41	0.024	
	<b>86</b> SHOUBRIDGE D. (GBR)	Ducati		Missing Sector				<b>1'38.089</b>		
<b>Overall Ideal Time</b>			20.375	25.856	23.777	24.924	<b>1'34.932</b>			



# Prosecco DOC UK Round, 2-4 July 2021

## Analysis Free Practice

1° 1 J. DAY (1'35.482)							
Lap	Seg.1	Seg.2	Seg.3	Seg.4	Lap Time	km/h	Local Time
1		30.133	25.877	26.575	233.4	12:07'01.982	
2	21.174	27.703	24.745	26.293	1'39.915	<b>243,4</b>	12:08'41.897
3	21.073	27.375	24.518	25.082	1'38.048	237,5	12:10'19.945
4	20.693	26.077	24.722	25.413	1'36.905	238,0	12:11'56.850
5	20.725	26.052	24.349	25.124	1'36.250	239,1	12:13'33.100
6	20.441	25.931	24.162	25.119	1'35.653	239,6	12:15'08.753
7	20.788	25.921	24.213	<b>24.924</b>	1'35.846	238,5	12:16'44.599
8	20.549	<b>25.918</b>	24.272	25.408	1'36.147	239,6	12:18'20.746
9	20.986	27.685	24.964	32.490	1'46.125P	232,9	12:20'06.871
10	5'00.661	27.508	28.053	26.388	6'22.610P	172,2	12:26'29.481
11	20.463	25.952	24.126	24.941	<b>1'35.482</b>	239,1	12:28'04.963
12	<b>20.375</b>	25.931	<b>24.037</b>	26.327	1'36.670	239,6	12:29'41.633
13	20.400	27.420	25.410	26.150	1'39.380	216,1	12:31'21.013

5° 2 C. NEVE (1'36.383)							
Lap	Seg.1	Seg.2	Seg.3	Seg.4	Lap Time	km/h	Local Time
1		28.010	25.778	26.242		230,4	12:06'45.921
2	21.171	26.744	24.456	25.286	1'37.657	233,9	12:08'23.578
3	20.727	26.430	24.465	<b>25.166</b>	1'36.788	232,4	12:10'00.366
4	<b>20.571</b>	26.365	<b>24.225</b>	25.222	<b>1'36.383</b>	233,9	12:11'36.749
5	20.573	26.570	24.446	26.073	1'37.662	230,4	12:13'14.411
6	20.628	26.396	24.475	25.417	1'36.916	232,4	12:14'51.327
7	20.745	<b>26.211</b>	24.611	32.884	1'44.451P	232,4	12:16'35.778
8	1'57.496	26.725	24.631	25.506	3'14.358P	233,9	12:19'50.136
9	20.705	26.914	24.709	25.979	1'38.307	231,9	12:21'28.443
10	20.820	26.535	24.530	27.907	1'39.792	233,4	12:23'08.235
11	20.635	26.405	24.325	28.053	1'39.418P	<b>234,4</b>	12:24'47.653
12	1'12.392	27.405	26.352	25.545	2'31.694P	233,9	12:27'19.347
13	20.598	26.233	24.548	25.507	1'36.886	233,4	12:28'56.233
14	23.093	27.466	25.629	30.770	1'46.958P	228,9	12:30'43.191

2° 75 E. PINSON (1'35.869)							
Lap	Seg.1	Seg.2	Seg.3	Seg.4	Lap Time	km/h	Local Time
1		30.443	25.819	29.032	224,6	12:07'19.281	
2	23.352	30.006	25.269	26.009	1'44.636	231,4	12:09'03.917
3	21.154	26.949	24.565	25.308	1'37.976	<b>238,0</b>	12:10'41.893
4	21.195	26.624	24.081	29.580	1'41.480P	237,0	12:12'23.373
5	37.443	26.855	24.199	25.512	1'54.009P	231,9	12:14'17.382
6	20.769	26.219	24.330	25.222	1'36.540	235,9	12:15'53.922
7	21.191	27.422	25.628	29.834	1'44.075P	229,4	12:17'37.997
8	4'19.387	26.852	25.003	<b>25.090</b>	5'36.332P	230,4	12:23'14.329
9	20.905	26.162	24.122	25.163	1'36.352	232,9	12:24'50.681
10	20.485	<b>25.856</b>	24.745	25.141	1'36.227	237,5	12:26'26.908
11	20.740	26.091	<b>23.777</b>	25.261	<b>1'35.869</b>	233,9	12:28'02.777
12	<b>20.377</b>	27.150	24.514	25.438	1'37.479	230,9	12:29'40.256
13	20.586	26.317	24.324	25.161	1'36.388	237,0	12:31'16.644

6° 89 D. JONES (1'36.401)							
Lap	Seg.1	Seg.2	Seg.3	Seg.4	Lap Time	km/h	Local Time
1		30.672	27.516	29.229		202,7	12:07'17.331
2	21.681	27.089	25.502	25.758	1'40.030	225,6	12:08'57.361
3	20.981	27.120	24.727	25.537	1'38.365	234,9	12:10'35.726
4	20.726	26.499	<b>24.311</b>	25.425	1'36.961	<b>239,1</b>	12:12'12.687
5	21.738	28.469	25.611	30.698	1'46.516P	213,5	12:13'59.203
6	4'15.220	29.426	24.722	25.673	5'35.041P	233,9	12:19'34.244
7	20.745	26.441	24.368	25.277	1'36.831	235,4	12:21'11.075
8	<b>20.558</b>	<b>26.361</b>	24.314	<b>25.168</b>	<b>1'36.401</b>	232,4	12:22'47.476
9	21.955	28.793	26.869	32.903	1'50.520P	197,5	12:24'37.996
10	1'52.773	26.995	24.686	25.796	3'10.250P	233,9	12:27'48.246
11	21.884	27.840	25.946	26.067	1'41.737	226,0	12:29'29.983
12	21.019	27.057	24.877	25.856	1'38.809	236,4	12:31'08.792

3° 43 S. BULPIN (1'36.143)							
Lap	Seg.1	Seg.2	Seg.3	Seg.4	Lap Time	km/h	Local Time
1		28.000	24.883	25.798		231,4	12:06'44.823
2	20.981	26.588	24.191	25.260	1'37.020	232,4	12:08'21.843
3	<b>20.569</b>	26.297	<b>24.127</b>	25.529	1'36.522	232,9	12:09'58.365
4	20.729	26.263	24.257	25.372	1'36.621	232,9	12:11'34.986
5	21.766	26.808	24.418	26.767	1'39.759	233,9	12:13'14.745
6	20.752	26.497	24.601	26.019	1'37.869	232,4	12:14'52.614
7	20.841	26.528	24.856	25.771	1'37.996	226,5	12:16'30.610
8	20.729	26.209	24.402	25.308	1'36.648	232,4	12:18'07.258
9	20.677	26.335	24.172	25.916	1'37.100	<b>235,4</b>	12:19'44.358
10	22.022	28.517	26.490	26.860	1'43.889	201,2	12:21'28.247
11	20.773	26.249	24.659	25.523	1'37.204	232,4	12:23'05.451
12	20.682	<b>26.108</b>	24.187	<b>25.166</b>	<b>1'36.143</b>	233,4	12:24'41.594
13	20.644	26.726	26.436	33.338	1'47.144P	195,7	12:26'28.738
14	3'19.686	30.176	27.039	30.751	4'47.652P	215,2	12:31'16.390

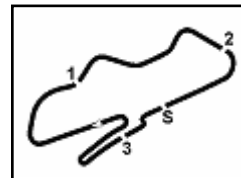
7° 4 J. MCGUINNESS (1'36.995)							
Lap	Seg.1	Seg.2	Seg.3	Seg.4	Lap Time	km/h	Local Time
1							12:07'54.173
2						1'40.884	12:09'35.057
3			24.909	25.938	1'39.383	231,9	12:11'14.440
4	21.129	26.729	24.653	25.564	1'38.075	231,9	12:12'52.515
5	21.007	27.254	24.536	26.040	1'38.837	<b>234,9</b>	12:14'31.352
6	<b>20.791</b>	27.309	25.118	25.892	1'39.110	233,9	12:16'10.462
7	21.363	27.507	24.990	39.075	1'52.935P	231,4	12:18'03.397
8	3'13.229	28.789	25.373	26.226	4'33.617P	230,4	12:22'37.014
9	21.435	27.574	24.911	25.952	1'39.872	231,9	12:24'16.886
10	21.815	27.458	24.918	25.764	1'39.955	234,4	12:25'56.841
11	21.019	26.813	24.978	25.474	1'38.284	<b>234,9</b>	12:27'35.125
12	21.423	27.588	27.401	28.752	1'45.164	179,1	12:29'20.289
13	20.868	<b>26.384</b>	<b>24.374</b>	<b>25.369</b>	<b>1'36.995</b>	231,4	12:30'57.284

4° 9 C. WALKER (1'36.367)							
Lap	Seg.1	Seg.2	Seg.3	Seg.4	Lap Time	km/h	Local Time
1		30.244	26.374	28.031		216,9	12:07'00.641
2	21.917	27.230	25.486	27.123	1'41.756	225,6	12:08'42.397
3	21.163	27.419	24.793	25.875	1'39.250	237,0	12:10'21.647
4	20.950	26.405	24.487	25.584	1'37.426	<b>238,5</b>	12:11'59.073
5	20.894	26.551	24.553	25.617	1'37.615	236,4	12:13'36.688
6	20.710	26.252	<b>24.352</b>	25.555	1'36.869	235,9	12:15'13.557
7	21.582	28.150	25.240	34.027	1'48.999P	231,4	12:17'02.556
8	5'09.068	27.984	24.929	26.265	6'28.246P	234,9	12:23'30.802
9	20.733	26.518	24.660	26.260	1'38.171	234,4	12:25'08.973
10	<b>20.628</b>	26.529	24.416	25.407	1'36.980	235,9	12:26'45.953
11	20.642	<b>26.119</b>	24.394	<b>25.212</b>	<b>1'36.367</b>	237,0	12:28'22.320
12	21.052	27.185	24.912	25.760	1'38.909	231,9	12:30'01.229

8° 44 E. BEST (1'37.575)							
Lap	Seg.1	Seg.2	Seg.3	Seg.4	Lap Time	km/h	Local Time
1		29.594	25.538	29.180		227,5	12:07'19.576
2	22.596	27.616	24.779	26.138	1'41.129	237,0	12:09'00.705
3	21.302	27.261	24.408	25.989	1'38.960	235,9	12:10'39.665
4	21.232	26.987	24.642	26.109	1'38.970	234,4	12:12'18.635
5	20.889	26.874	24.528	26.007	1'38.298	235,9	12:13'56.933
6	21.288	26.637	24.840	26.045	1'38.810	226,5	12:15'35.743
7	22.461	27.570	24.695	33.940	1'48.666P	234,4	12:17'24.409
8	3'29.910	26.741	24.363	25.843	4'46.857P	<b>238,0</b>	12:22'11.266
9	21.820	27.944	24.372	25.642	1'39.778	234,9	12:23'51.044
10	20.972	26.734	<b>24.256</b>	<b>25.613</b>	<b>1'37.575</b>	235,9	12:25'28.619
11	21.081	26.683	25.119	25.761	1'38.644	229,9	12:27'07.263

02/07/2021 P = Pits In/Out - C = Lap Time Cancelled





**Prosecco DOC UK Round, 2-4 July 2021**  
**Analysis Free Practice**

12	20.957	<b>26.443</b>	24.403	26.129	1'37.932	234,4	12:28'45.195
13	<b>20.856</b>	26.715	25.060	27.898	1'40.529	237,0	12:30'25.724

9°								13°							
3 S. COX (1'38.001)								42 C. CURRIE (1'38.505)							
Lap	Seg.1	Seg.2	Seg.3	Seg.4	Lap Time	km/h	Local Time	Lap	Seg.1	Seg.2	Seg.3	Seg.4	Lap Time	km/h	Local Time
1		29.913	26.860	28.543		232,4	12:07'06.989	1		31.538	27.389	27.291		223,2	12:07'04.264
2	22.827	27.956	25.603	26.490	1'42.876	230,9	12:08'49.865	2	22.521	28.331	26.166	26.491	1'43.509	230,4	12:08'47.773
3	21.778	26.920	25.046	25.870	1'39.614	<b>235,4</b>	12:10'29.479	3	21.720	27.310	25.361	26.087	1'40.478	232,9	12:10'28.251
4	21.728	27.207	25.112	25.950	1'39.997	233,9	12:12'09.476	4	21.428	27.208	25.028	26.232	1'39.896	228,9	12:12'08.147
5	21.412	27.005	25.432	26.102	1'39.951	234,9	12:13'49.427	5	21.491	27.941	26.469	26.451	1'42.352	229,9	12:13'50.499
6	21.119	27.178	25.069	26.429	1'39.795	<b>235,4</b>	12:15'29.222	6	21.636	27.664	25.581	32.933	1'47.814P	226,0	12:15'38.313
7	21.380	27.284	24.930	25.677	1'39.271	230,4	12:17'08.493	7	43.685	28.667	25.955	26.113	2'04.420P	220,0	12:17'42.733
8	21.322	26.834	24.899	25.720	1'38.775	232,9	12:18'47.268	8	21.387	27.212	24.849	<b>25.458</b>	1'38.906	233,9	12:19'21.639
9	21.165	26.729	<b>24.673</b>	25.784	1'38.351	231,4	12:20'25.619	9	<b>21.201</b>	26.956	24.872	25.482	1'38.511	234,9	12:21'00.150
10	21.207	27.659	24.892	25.595	1'39.353	230,4	12:22'04.972	10	21.546	29.252	26.789	27.410	1'44.997	201,2	12:22'45.147
11	21.274	26.709	25.231	25.635	1'38.849	234,4	12:23'43.821	11	22.320	28.015	25.613	27.516	1'43.464	222,8	12:24'28.611
12	21.237	26.795	24.864	25.560	1'38.456	231,4	12:25'22.277	12	21.248	27.158	24.955	25.548	1'38.909	<b>235,4</b>	12:26'07.520
13	21.063	<b>26.679</b>	28.836	26.881	1'43.459C	233,9	12:27'05.736	13	21.300	27.705	25.167	26.095	1'40.267	234,4	12:27'47.787
14	21.144	26.732	25.030	26.257	1'39.163	232,9	12:28'44.899	14	22.322	28.177	26.130	32.397	1'49.026	228,9	12:29'36.813
15	<b>20.889</b>	26.709	24.934	<b>25.469</b>	<b>1'38.001</b>	231,9	12:30'22.900	15	21.277	<b>26.898</b>	<b>24.830</b>	25.500	<b>1'38.505</b>	233,9	12:31'15.318

10°								14°							
86 D. SHOUBRIDGE (1'38.089)								64 M. TUSTIN (1'38.566)							
Lap	Seg.1	Seg.2	Seg.3	Seg.4	Lap Time	km/h	Local Time	Lap	Seg.1	Seg.2	Seg.3	Seg.4	Lap Time	km/h	Local Time
1							12:09'23.176	1		30.300	27.326	27.928		219,6	12:07'00.408
2					1'58.977P		12:11'22.153	2	21.577	27.519	25.657	26.243	1'40.996	232,4	12:08'41.404
3					3'41.128P		12:15'03.281	3	21.463	27.837	25.008	26.324	1'40.632	<b>234,4</b>	12:10'22.036
4					<b>1'38.089</b>		12:16'41.370	4	21.317	27.045	24.907	25.933	1'39.202	<b>234,4</b>	12:12'01.238
5					1'50.673P		12:18'32.043	5	21.016	27.481	25.025	26.006	1'39.528	232,9	12:13'40.766
6	9'00.925	27.514	26.023	26.045	10'20.507CP	232,9	12:28'52.550	6	21.428	27.180	24.910	<b>25.824</b>	1'39.342	231,9	12:15'20.108
7	<b>20.864</b>	<b>26.769</b>	<b>24.509</b>	<b>26.932</b>	1'39.074	<b>233,4</b>	12:30'31.624	7	21.297	27.033	24.902	25.831	1'39.063	231,4	12:16'59.171
8								8	21.158	27.191	25.502	25.856	1'39.707	227,0	12:18'38.878
9								9	21.192	27.100	24.929	25.887	1'39.108	231,4	12:20'17.986
10								10	21.202	27.041	25.101	26.109	1'39.453	232,4	12:21'57.439
11								11	21.011	27.086	25.006	29.893	1'42.996P	230,9	12:23'40.435
12								12	2'31.516	27.171	25.086	26.081	3'49.854P	231,9	12:27'30.289
13								13	21.079	<b>26.803</b>	24.858	26.053	1'38.793	<b>234,4</b>	12:29'09.082
14								14	<b>20.869</b>	26.858	<b>24.755</b>	26.084	<b>1'38.566</b>	<b>234,4</b>	12:30'47.648

11°								15°							
40 D. BOUCHER (1'38.254)								24 L. MCLAUGHLIN (1'39.127)							
Lap	Seg.1	Seg.2	Seg.3	Seg.4	Lap Time	km/h	Local Time	Lap	Seg.1	Seg.2	Seg.3	Seg.4	Lap Time	km/h	Local Time
1		32.458	27.361	28.299		211,8	12:06'57.251	1		30.937	26.576	28.667		220,9	12:07'10.828
2	22.770	28.770	26.181	28.005	1'45.726	228,9	12:08'42.977	2	22.235	28.846	25.611	27.807	1'44.499	225,1	12:08'55.327
3	22.142	28.223	25.337	26.340	1'42.042	227,0	12:10'25.019	3	22.289	28.167	25.580	27.524	1'43.560	226,5	12:10'38.887
4	21.963	28.411	25.251	26.319	1'41.944	229,9	12:12'06.963	4	21.917	27.728	25.167	27.178	1'41.990	<b>227,9</b>	12:12'20.877
5	21.945	27.224	25.500	26.498	1'41.167	232,4	12:13'48.130	5	22.201	28.267	26.197	34.315	1'50.980P	227,0	12:14'11.857
6	21.504	27.395	25.290	26.509	1'40.698	233,4	12:15'28.828	6	1'48.228	28.456	25.764	27.582	3'10.030P	223,2	12:17'21.887
7	21.628	27.841	25.526	26.489	1'41.484	225,1	12:17'10.312	7	22.053	28.160	25.201	26.466	1'41.880	222,8	12:19'03.767
8	21.974	27.816	25.628	33.897	1'49.315P	227,9	12:18'59.627	8	21.972	27.540	25.145	26.937	1'41.594	223,2	12:20'45.361
9	2'41.063	27.978	25.513	26.274	4'00.828P	230,9	12:23'00.455	9	21.779	27.121	31.036	28.244	1'48.180C	224,2	12:22'33.541
10	21.374	26.733	<b>24.793</b>	<b>25.714</b>	1'38.614	<b>235,9</b>	12:24'39.069	10	21.691	27.135	24.996	26.621	1'40.443	225,1	12:24'13.984
11	<b>21.172</b>	<b>26.432</b>	24.908	25.742	<b>1'38.254</b>	234,9	12:26'17.323	11	22.509	28.050	25.119	26.013	1'41.691	223,7	12:25'55.675
12	21.189	26.915	25.398	26.777	1'40.279	234,9	12:27'57.602	12	21.707	27.143	25.350	26.181	1'40.381	226,0	12:27'36.056
13	21.447	26.923	25.433	26.890	1'40.693	233,4	12:29'38.295	13	<b>21.238</b>	27.032	24.923	<b>25.934</b>	<b>1'39.127</b>	223,2	12:29'15.183
14	21.241	26.944	24.835	26.425	1'39.445	234,9	12:31'17.740	14	21.315	<b>26.962</b>	<b>24.824</b>	26.150	1'39.251	224,2	12:30'54.434

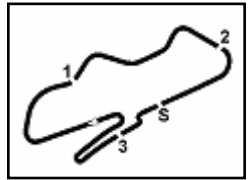
12°								16°							
17 C. STEVENS (1'38.392)								59 A. SOLERA (1'39.487)							
Lap	Seg.1	Seg.2	Seg.3	Seg.4	Lap Time	km/h	Local Time	Lap	Seg.1	Seg.2	Seg.3	Seg.4	Lap Time	km/h	Local Time
1							12:07'38.237	1		31.767	27.091	28.253		222,3	12:07'15.718
2					1'43.219		12:09'21.456	2	22.190	27.845	25.576	26.726	1'42.337	237,5	12:08'58.055
3	21.725	27.536	25.208	26.359	1'40.828	235,9	12:11'02.284	3	21.644	<b>27.249</b>	<b>24.528</b>	26.598	1'40.019	239,1	12:10'38.074
4	21.324	27.580	26.223	34.968	1'50.095P	232,9	12:12'52.379	4	<b>21.199</b>	<b>27.372</b>	<b>25.329</b>	<b>26.169</b>	1'40.069	238,5	12:12'18.143
5	1'54.643	27.991	25.854	26.762	3'15.250P	232,9	12:16'07.629	5	21.228	27.480	24.596	26.183	<b>1'39.487</b>	<b>240,7</b>	12:13'57.630
6	21.901	27.745	25.410	26.560	1'41.616	232,4	12:17'49.245	6	21.494	27.979	25.529	34.810	1'49.812P	232,4	12:15'47.442
7	21.433	27.249	24.852	26.254	1'39.788	<b>239,1</b>	12:19'29.033	7	5'02.632	28.994	26.162	27.977	6'25.765P	230,4	12:22'13.207
8	21.213	27.004	24.937	26.140	1'39.294	235,9	12:21'08.327	8	23.562	27.528	25.805	32.593	1'49.488P	232,4	12:24'02.695
9	21.077	26.883	<b>24.692</b>	25.829	1'38.481	236,4	12:22'46.808								
10	<b>21.062</b>	28.393	31.076	28.182	1'48.713C	216,5	12:24'35.521								
11	21.076	<b>26.842</b>	24.765	<b>25.709</b>	<b>1'38.392</b>	238,5	12:26'13.913								
12	21.884	28.287	26.226	30.262	1'46.659P	227,9	12:28'00.572								
13	45.108	29.755	26.363	29.318	2'10.544P	212,7	12:30'11.116								

02/07/2021 P = Pits In/Out - C = Lap Time Cancelled





5



Prosecco DOC UK Round, 2-4 July 2021  
Analysis Free Practice

Donington Park 4.023 m

3 / 5

17° 33 I. QUAYLE (1'39.896)							
Lap	Seg.1	Seg.2	Seg.3	Seg.4	Lap Time	km/h	Local Time
1		31.058	26.885	28.666		224.6	12:06'56.291
2	22.596	28.652	25.360	27.204	1'43.812	231,9	12:08'40.103
3	21.950	28.348	25.622	26.690	1'42.610	229,9	12:10'22.713
4	21.544	27.831	24.775	27.105	1'41.255	233,9	12:12'03.968
5	21.745	27.408	<b>24.715</b>	26.568	1'40.436	234,9	12:13'44.404
6	21.603	27.410	25.106	26.741	1'40.860	229,9	12:15'25.264
7	21.416	27.469	24.747	26.264	<b>1'39.896</b>	231,9	12:17'05.160
8	21.924	28.514	25.144	26.866	1'42.448	233,4	12:18'47.608
9	29.459	27.589	24.748	26.965	1'48.761	236,4	12:20'36.369
10	21.548	27.616	25.017	26.784	1'40.965	235,4	12:22'17.334
11	21.933	27.326	24.894	27.365	1'41.518	235,9	12:23'58.852
12	<b>21.281</b>	28.012	25.510	26.965	1'41.768	217,8	12:25'40.620
13	21.597	<b>26.985</b>	25.413	<b>26.205</b>	1'40.200	<b>238,0</b>	12:27'20.820
14	21.323	27.805	25.385	26.522	1'41.035	235,9	12:29'01.855
15	21.283	27.815	25.411	26.450	1'40.959	230,9	12:30'42.814

18° 18 R. SPENCER-FLEET (1'39.940)							
Lap	Seg.1	Seg.2	Seg.3	Seg.4	Lap Time	km/h	Local Time
1							12:07'00.833
2					1'42.008		12:08'42.841
3					1'41.665		12:10'24.506
4					1'43.000		12:12'07.506
5	21.731	27.691	25.586	26.375	1'41.383	220,9	12:13'48.889
6	<b>21.436</b>	27.163	25.375	26.476	1'40.450	221,9	12:15'29.339
7	21.500	27.695	<b>24.996</b>	<b>26.051</b>	1'40.242	<b>234,4</b>	12:17'09.581
8	21.613	<b>26.909</b>	25.228	26.190	<b>1'39.940</b>	230,4	12:18'49.521
9	21.867	27.516	25.288	26.146	1'40.817	225,6	12:20'30.338
10	21.544	27.437	25.408	26.289	1'40.678	233,4	12:22'11.016
11	21.946	27.749	25.897	33.920	1'49.512P	222,8	12:24'00.528

19° 49 O. SAVAGE (1'40.099)							
Lap	Seg.1	Seg.2	Seg.3	Seg.4	Lap Time	km/h	Local Time
1		31.176	26.688	27.972		229,4	12:06'58.381
2	22.226	28.445	25.854	27.305	1'43.830	<b>237,0</b>	12:08'42.211
3	21.863	27.965	25.542	26.781	1'42.151	232,9	12:10'24.362
4	22.138	28.294	25.331	27.054	1'42.817	233,9	12:12'07.179
5	21.847	28.235	25.588	27.263	1'42.933	228,9	12:13'50.112
6	21.378	<b>27.259</b>	<b>24.904</b>	26.558	1'40.099	235,9	12:15'30.211
7	<b>21.260</b>	27.566	25.291	26.595	1'40.712	233,4	12:17'10.923
8	21.600	28.042	25.390	26.663	1'41.695	231,9	12:18'52.618
9	21.604	27.754	25.294	26.497	1'41.149	230,9	12:20'33.767
10	21.489	27.633	25.483	<b>26.344</b>	1'40.949	233,4	12:22'14.716
11	22.436	28.029	25.646	37.697	1'53.808P	227,9	12:24'08.524
12	2'32.802	28.109	26.255	26.689	3'53.855P	226,5	12:28'02.379
13	21.516	27.492	25.235	26.497	1'40.740	232,4	12:29'43.119
14	21.422	27.697	25.472	26.901	1'41.492	232,4	12:31'24.611

20° 92 M. JONES (1'40.102)							
Lap	Seg.1	Seg.2	Seg.3	Seg.4	Lap Time	km/h	Local Time
1		31.001	27.267	27.937		218,7	12:07'37.719
2	22.176	29.062	25.687	27.769	1'44.694	229,4	12:09'22.413
3	21.586	27.655	25.270	26.625	1'41.136	234,4	12:11'03.549
4	21.457	27.695	25.781	27.075	1'42.008	<b>234,9</b>	12:12'45.557
5	21.559	28.091	25.630	37.207	1'52.487P	233,9	12:14'38.044
6	51.996	27.845	25.609	26.528	2'11.978P	230,9	12:16'50.022
7	21.445	27.493	25.175	26.422	1'40.535	230,9	12:18'30.557
8	<b>21.327</b>	<b>27.460</b>	25.085	<b>26.230</b>	1'40.102	231,4	12:20'10.659
9	21.556	27.802	25.659	32.216	1'47.233P	228,4	12:21'57.892
10	2'45.946	28.132	25.460	26.963	4'06.501P	232,4	12:26'04.393
11	21.695	28.033	25.952	27.274	1'42.954	230,4	12:27'47.347

21° 14 M. LOFTHOUSE (1'40.450)							
Lap	Seg.1	Seg.2	Seg.3	Seg.4	Lap Time	km/h	Local Time
1		32.525	27.996	31.307		217,4	12:07'11.041
2	23.398	30.223	26.757	29.033	1'49.411	220,5	12:09'00.452
3	23.185	29.065	26.236	28.487	1'46.973	227,5	12:10'47.425
4	22.828	28.652	26.280	28.036	1'45.796	227,9	12:12'33.221
5	22.868	28.351	26.017	30.390	1'47.626	226,5	12:14'20.847
6	22.094	27.767	26.118	30.264	1'46.243	227,5	12:16'07.090
7	22.312	28.203	25.726	28.391	1'44.632	229,9	12:17'51.722
8	22.215	30.089	25.818	27.753	1'45.875	223,7	12:19'37.597
9	23.006	28.147	25.874	35.424	1'52.451P	228,4	12:21'30.048
10	2'04.412	31.059	26.076	27.382	3'28.929P	222,3	12:24'58.977
11	22.226	27.279	25.203	<b>26.508</b>	1'41.216	229,9	12:26'40.193
12	<b>21.738</b>	<b>27.097</b>	<b>25.021</b>	26.594	<b>1'40.450</b>	<b>230,4</b>	12:28'20.643
13	21.819	27.506	25.240	26.745	1'41.310	226,5	12:30'01.953

22° 6 P. HASLER (1'40.489)							
Lap	Seg.1	Seg.2	Seg.3	Seg.4	Lap Time	km/h	Local Time
1		32.608	27.005	28.056		224,6	12:06'59.973
2	22.415	29.217	25.838	26.602	1'44.072	218,7	12:08'44.045
3	21.826	28.207	25.521	26.316	1'41.870	226,0	12:10'25.915
4	21.864	28.686	25.167	27.462	1'43.179	233,9	12:12'09.094
5	21.576	27.943	25.582	27.405	1'42.506	233,4	12:13'51.600
6	21.879	27.883	25.640	26.659	1'42.061	224,2	12:15'33.661
7	21.682	28.130	25.290	26.355	1'41.457	234,9	12:17'15.118
8	21.470	27.725	25.253	26.557	1'41.005	224,2	12:18'56.123
9	22.247	27.917	<b>25.014</b>	26.367	1'41.545	233,9	12:20'37.668
10	21.650	27.613	25.127	<b>26.099</b>	<b>1'40.489</b>	231,9	12:22'18.157
11	22.155	27.802	25.268	26.280	1'41.505	223,7	12:23'59.662
12	21.487	27.551	25.668	26.682	1'41.388	225,6	12:25'41.050
13	21.638	27.748	27.683	27.125	1'44.194C	<b>236,4</b>	12:27'25.244
14	<b>21.365</b>	<b>27.269</b>	25.401	26.517	1'40.552	225,1	12:29'05.796
15	21.725	28.435	25.358	35.075	1'50.593P	220,5	12:30'56.389

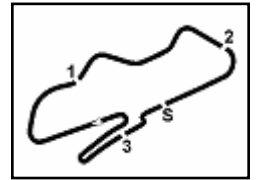
23° 90 C. KENNELLY (1'40.974)							
Lap	Seg.1	Seg.2	Seg.3	Seg.4	Lap Time	km/h	Local Time
1		29.486	26.010	27.112		223,2	12:06'52.051
2	22.173	<b>27.642</b>	25.366	26.540	1'41.721	227,9	12:08'33.772
3	21.940	28.105	25.425	26.495	1'41.965	227,9	12:10'15.737
4	21.982	28.163	25.980	26.999	1'43.124	230,4	12:11'58.861
5	21.841	27.812	25.436	26.401	1'41.490	230,9	12:13'40.351
6	22.459	27.650	25.250	26.426	1'41.785	230,9	12:15'22.136
7	21.923	27.660	<b>25.175</b>	26.366	1'41.124	<b>231,4</b>	12:17'03.260
8	<b>21.632</b>	28.017	25.420	26.973	1'42.042	228,9	12:18'45.302
9	21.858	27.728	25.328	26.602	1'41.516	229,9	12:20'26.818
10	21.673	27.927	26.011	26.537	1'42.148	230,9	12:22'08.966
11	21.773	27.673	25.241	<b>26.287</b>	<b>1'40.974</b>	<b>231,4</b>	12:23'49.940
12	21.899	28.480	25.650	31.026	1'47.055P	227,5	12:25'36.995
13	1'19.558	29.123	26.412	27.228	2'42.321P	230,4	12:28'19.316
14	22.363	28.654	25.894	26.750	1'43.661	227,0	12:30'02.977

24° 5 M. STEVENS (1'41.043)							
Lap	Seg.1	Seg.2	Seg.3	Seg.4	Lap Time	km/h	Local Time
1		30.807	26.775	28.778		227,0	12:06'56.567
2	22.671	28.555	25.656	27.057	1'43.939	230,4	12:08'40.506
3	22.177	28.377	25.648	26.512	1'42.714	231,4	12:10'23.220
4	23.101	29.830	25.293	28.706	1'46.930	233,4	12:12'10.150
5	21.701	27.757	<b>25.082</b>	26.818	1'41.358	<b>233,9</b>	12:13'51.508
6	<b>21.485</b>	<b>27.700</b>	26.266	26.383	1'41.834	232,4	12:15'33.342
7	21.700	28.184	25.723	36.155	1'51.762P	229,4	12:17'25.104

02/07/2021

P = Pits In/Out - C = Lap Time Cancelled



**Prosecco DOC UK Round, 2-4 July 2021**  
**Analysis Free Practice**

Donington Park 4.023 m

4 / 5

8	48.134	30.825	28.116	36.697	2'23.772P	197,1	12:19'48.876
9	2'54.108	29.767	26.065	27.213	4'17.153P	227,5	12:24'06.029
10	22.151	28.230	25.738	26.715	1'42.834	227,0	12:25'48.863
11	21.714	28.198	25.742	26.712	1'42.366	212,7	12:27'31.229
12	21.548	28.082	25.121	<b>26.292</b>	<b>1'41.043</b>	232,4	12:29'12.272
13	21.633	27.932	25.377	26.779	1'41.721	228,4	12:30'53.993

25° 36 E. POTTER (1'41.066)							
Lap	Seg.1	Seg.2	Seg.3	Seg.4	Lap Time	km/h	Local Time
1		31.850	27.377	28.450		217,8	12:07'13.751
2	22.562	29.076	26.677	27.751	1'46.066	230,4	12:08'59.817
3	21.927	28.346	26.264	26.811	1'43.348	234,9	12:10'43.165
4	21.817	28.203	26.272	26.837	1'43.129	232,4	12:12'26.294
5	22.188	28.076	25.797	26.231	1'42.292	234,4	12:14'08.586
6	21.857	27.965	25.536	26.603	1'41.961	236,4	12:15'50.547
7	22.047	28.590	26.193	26.528	1'43.358	223,7	12:17'33.905
8	21.840	28.104	26.046	33.402	1'49.392P	232,9	12:19'23.297
9	4'51.946	28.787	26.153	26.624	6'13.510P	233,4	12:25'36.807
10	21.981	28.388	26.195	26.685	1'43.249	<b>237,5</b>	12:27'20.056
11	21.649	27.927	<b>25.457</b>	26.069	1'41.102	236,4	12:29'01.158
12	<b>21.629</b>	<b>27.852</b>	25.549	<b>26.036</b>	<b>1'41.066</b>	234,4	12:30'42.224

26° 8 A. COMPTON (1'41.112)							
Lap	Seg.1	Seg.2	Seg.3	Seg.4	Lap Time	km/h	Local Time
1		30.959	27.335	28.361		222,3	12:07'38.802
2	22.182	28.687	25.947	27.362	1'44.178	223,7	12:09'22.980
3	22.327	28.777	<b>25.314</b>	26.390	1'42.808	<b>235,4</b>	12:11'05.788
4	<b>21.361</b>	27.897	25.502	27.006	1'41.766	227,9	12:12'47.554
5	21.537	28.298	25.348	26.958	1'42.141	234,9	12:14'29.695
6	21.670	27.955	25.573	27.348	1'42.546	227,0	12:16'12.241
7	22.102	28.238	25.774	34.657	1'50.771P	223,7	12:18'03.012
8	4'09.033	28.243	25.367	26.478	5'29.121P	227,5	12:23'32.133
9	21.711	27.859	25.488	26.934	1'41.992	231,4	12:25'14.125
10	21.681	27.770	26.204	<b>26.346</b>	1'42.001	228,4	12:26'56.126
11	21.389	<b>27.642</b>	25.577	26.504	<b>1'41.112</b>	229,4	12:28'37.238
12	22.489	28.083	25.377	26.385	1'42.334	228,4	12:30'19.572

27° 32 A. HUGHES (1'41.703)							
Lap	Seg.1	Seg.2	Seg.3	Seg.4	Lap Time	km/h	Local Time
1		31.527	27.364	29.439		216,5	12:07'03.894
2	23.078	28.800	25.911	27.991	1'45.780	217,4	12:08'49.674
3	22.148	<b>27.491</b>	<b>25.341</b>	26.919	1'41.899	229,4	12:10'31.573
4	21.721	27.732	25.655	27.039	1'42.147	232,9	12:12'13.720
5	21.838	28.153	41.633	27.781	1'59.405	<b>235,4</b>	12:14'13.125
6	22.103	27.797	25.917	33.799	1'49.616P	230,4	12:16'02.741
7	3'25.450	28.659	25.744	26.856	4'46.709P	233,4	12:20'49.450
8	21.714	27.957	25.420	<b>26.612</b>	<b>1'41.703</b>	231,9	12:22'31.153
9	<b>21.686</b>	27.513	26.213	27.166	1'42.578	234,9	12:24'13.731
10	22.555	28.672	26.055	26.944	1'44.226	225,1	12:25'57.957
11	22.070	27.864	26.498	30.989	1'47.421P	228,9	12:27'45.378

28° 16 J. BUCHANAN (1'41.794)							
Lap	Seg.1	Seg.2	Seg.3	Seg.4	Lap Time	km/h	Local Time
1		31.147	27.352	28.413		222,3	12:07'03.312
2	23.059	28.253	25.899	26.914	1'44.125	223,7	12:08'47.437
3	22.518	27.853	<b>25.111</b>	<b>26.312</b>	<b>1'41.794</b>	227,0	12:10'29.231
4	22.378	27.952	25.602	26.782	1'42.714	<b>228,4</b>	12:12'11.945
5	<b>22.317</b>	28.430	25.514	26.585	1'42.846	226,5	12:13'54.791
6	23.162	29.125	26.355	36.226	1'54.868P	221,9	12:15'49.659
7	4'12.448	33.547	30.003	34.696	5'50.694P	170,3	12:21'40.353
8	53.237	28.464	25.906	27.154	2'14.761P	223,2	12:23'55.114

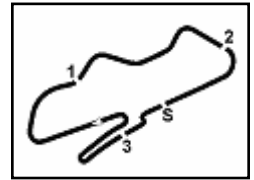
29° 31 M. BAINBRIDGE (1'42.090)							
Lap	Seg.1	Seg.2	Seg.3	Seg.4	Lap Time	km/h	Local Time
1		32.853	27.943	30.513		213,1	12:07'18.649
2	23.753	30.325	26.718	27.640	1'48.436	218,3	12:09'07.085
3	22.349	28.534	25.808	27.365	1'44.056	227,5	12:10'51.141
4	22.347	28.400	25.832	27.386	1'43.965	224,6	12:12'35.106
5	21.940	28.287	26.065	27.570	1'43.862	225,1	12:14'18.968
6	21.843	<b>27.968</b>	<b>25.607</b>	27.055	1'42.473	<b>227,9</b>	12:16'01.441
7	22.641	29.029	26.236	34.660	1'52.566P	222,3	12:17'54.007
8	5'03.823	29.292	25.969	27.286	6'26.370P	223,7	12:24'20.377
9	21.907	28.414	25.788	27.115	1'43.224	224,6	12:26'03.601
10	22.097	28.161	25.930	26.875	1'43.063	227,5	12:27'46.664
11	<b>21.752</b>	28.047	25.635	<b>26.656</b>	<b>1'42.090</b>	226,5	12:29'28.754

30° 12 S. TAYLOR (1'42.113)							
Lap	Seg.1	Seg.2	Seg.3	Seg.4	Lap Time	km/h	Local Time
1		30.541	26.833	29.763		225,1	12:08'03.313
2	22.730	29.103	25.663	27.808	1'45.304	232,4	12:09'48.617
3	22.363	28.578	25.601	26.998	1'43.540	231,9	12:11'32.157
4	21.943	28.173	25.157	27.806	1'43.079	236,4	12:13'15.236
5	21.877	27.952	25.171	27.113	<b>1'42.113</b>	238,5	12:14'57.349
6	21.815	28.172	25.388	27.108	1'42.483	230,9	12:16'39.832
7	21.887	<b>27.578</b>	<b>25.094</b>	38.712	1'53.271P	237,0	12:18'33.103
8	5'46.297	28.511	25.622	26.985	7'07.415P	234,4	12:25'40.518
9	21.890	27.784	26.120	30.894	1'46.688	<b>240,7</b>	12:27'27.206
10	<b>21.431</b>	28.778	25.256	<b>26.824</b>	1'42.289	237,0	12:29'09.495
11	21.701	28.187	25.148	27.215	1'42.251	238,0	12:30'51.746

31° 19 S. BASTABLE (1'42.626)							
Lap	Seg.1	Seg.2	Seg.3	Seg.4	Lap Time	km/h	Local Time
1		31.907	27.520	28.821		224,2	12:07'06.803
2	23.295	29.058	26.114	27.469	1'45.936	226,0	12:08'52.739
3	22.251	28.591	<b>25.698</b>	27.155	1'43.695	<b>228,4</b>	12:10'36.434
4	21.950	28.022	26.075	27.469	1'43.516	225,1	12:12'19.950
5	22.136	29.403	26.619	27.620	1'45.778	216,5	12:14'05.728
6	22.203	28.172	25.794	33.621	1'49.790P	223,2	12:15'55.518
7	4'50.236	30.070	26.682	27.530	6'14.518P	222,3	12:22'10.036
8	22.632	27.993	26.764	27.419	1'44.808	211,4	12:23'54.844
9	21.884	<b>27.896</b>	25.886	<b>26.960</b>	<b>1'42.626</b>	225,6	12:25'37.470
10	21.787	28.608	26.563	27.304	1'44.262	219,1	12:27'21.732
11	21.909	28.751	26.263	26.983	1'43.906	225,6	12:29'05.638
12	<b>21.680</b>	28.917	26.304	27.517	1'44.418	219,6	12:30'50.056

32° 21 M. VENN (1'42.918)							
Lap	Seg.1	Seg.2	Seg.3	Seg.4	Lap Time	km/h	Local Time
1							12:07'07.015
2					1'47.436		12:08'54.451
3					1'43.455		12:10'37.906
4					1'43.288		12:12'21.194
5	22.185	27.940	25.857	<b>27.204</b>	1'43.186	226,5	12:14'04.380
6	21.981	28.944	25.887	33.650	1'50.462P	226,5	12:15'54.842
7	4'04.084	28.971	25.872	27.856	5'26.783P	226,5	12:21'21.625
8	<b>21.753</b>	27.923	<b>25.631</b>	34.013	1'49.320P	<b>227,5</b>	12:23'10.945
9	43.994	28.407	25.738	27.746	2'05.885P	226,5	12:25'16.830
10	21.790	<b>27.642</b>	25.969	27.517	<b>1'42.918</b>	226,0	12:26'59.748
11	22.315	28.876	27.256	34.189	1'52.636P	213,1	12:28'52.384

33° 45 T. STEVENS (1'43.022)							
Lap	Seg.1	Seg.2	Seg.3	Seg.4	Lap Time	km/h	Local Time
1		32.510	27.773	29.508		227,5	12:07'01.745
2	23.388	29.165	26.941	28.287	1'47.781	220,5	12:08'49.526
3	23.077	28.403	26.093	27.316	1'44.889	<b>227,9</b>	12:10'34.415



## Prosecco DOC UK Round, 2-4 July 2021

### Analysis Free Practice

Lap	Seg.1	Seg.2	Seg.3	Seg.4	Lap Time	km/h	Local Time
4	22.471	29.066	26.035	27.346	1'44.918	227,5	12:12'19.333
5	22.605	28.917	25.794	27.298	1'44.614	226,5	12:14'03.947
6	22.228	28.987	25.826	28.193	1'45.234	227,0	12:15'49.181
7	23.020	28.712	26.442	32.446	1'50.620P	224,6	12:17'39.801
8	2'56.458	29.022	26.018	29.614	4'21.112P	226,0	12:22'00.913
9	22.878	28.487	<b>25.504</b>	<b>26.282</b>	1'43.151	225,6	12:23'44.064
10	22.330	<b>28.165</b>	25.532	26.995	<b>1'43.022</b>	227,0	12:25'27.086
11	22.078	28.284	26.237	27.694	1'44.293	226,5	12:27'11.379
12	22.034	28.326	25.966	26.863	1'43.189	<b>227,9</b>	12:28'54.568
13	<b>21.946</b>	29.438	25.850	26.905	1'44.139	224,6	12:30'38.707

34° 11 B. FALLA (1'43.319)							
Lap	Seg.1	Seg.2	Seg.3	Seg.4	Lap Time	km/h	Local Time
1		30.696	27.153	27.589		220,0	12:07'02.108
2	22.839	28.163	25.769	26.744	1'43.515	226,5	12:08'45.623
3	22.479	28.162	25.640	27.038	<b>1'43.319</b>	230,9	12:10'28.942
4	22.117	28.156	<b>25.442</b>	30.422	1'46.137P	<b>233,4</b>	12:12'15.079
5	6'56.725	29.476	27.115	28.849	8'22.165P	225,1	12:20'37.244
6	23.599	28.140	25.472	<b>26.534</b>	1'43.745	231,9	12:22'20.989
7	22.205	28.380	30.998	27.489	1'49.072C	231,9	12:24'10.061
8	<b>22.093</b>	<b>27.804</b>	25.870	31.496	1'47.263P	228,9	12:25'57.324

35° 30 A. BOOTH (1'44.980)							
Lap	Seg.1	Seg.2	Seg.3	Seg.4	Lap Time	km/h	Local Time
1		33.203	28.933	31.463		173,6	12:07'18.093
2	23.950	30.294	27.518	28.545	1'50.307	195,0	12:09'08.400
3	23.149	29.427	26.428	27.702	1'46.706	219,6	12:10'55.106
4	22.704	29.172	26.640	27.714	1'46.230	222,3	12:12'41.336
5	22.538	<b>28.791</b>	26.130	28.037	1'45.496	221,9	12:14'26.832
6	<b>22.258</b>	28.848	26.245	27.629	<b>1'44.980</b>	<b>225,1</b>	12:16'11.812
7	22.682	29.341	26.492	27.727	1'46.242	213,1	12:17'58.054
8	23.294	29.659	26.383	27.520	1'46.856	215,2	12:19'44.910
9	22.575	29.540	26.690	27.589	1'46.394	213,1	12:21'31.304
10	23.189	29.262	26.623	27.739	1'46.813	222,3	12:23'18.117
11	23.227	28.890	<b>25.942</b>	27.959	1'46.018	221,4	12:25'04.135
12	23.443	29.510	27.140	27.364	1'47.457	210,2	12:26'51.592
13	22.584	28.856	26.676	<b>27.163</b>	1'45.279	218,3	12:28'36.871
14	22.817	29.334	26.790	27.920	1'46.861	211,8	12:30'23.732

36° 7 M. LONG (1'45.625)							
Lap	Seg.1	Seg.2	Seg.3	Seg.4	Lap Time	km/h	Local Time
1		32.312	28.012	29.423		221,9	12:07'08.338
2	<b>22.537</b>	28.667	<b>26.510</b>	27.911	<b>1'45.625</b>	222,3	12:08'53.963
3	23.293	<b>28.503</b>	26.925	27.906	1'46.627	221,4	12:10'40.590
4	23.283	29.052	27.257	27.995	1'47.587	224,6	12:12'28.177
5	22.717	29.221	26.863	<b>27.885</b>	1'46.686	<b>228,4</b>	12:14'14.863
6	22.926	28.670	26.844	37.424	1'55.864P	222,8	12:16'10.727

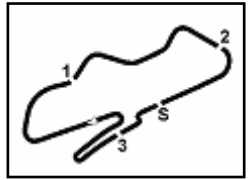
37° 912 M. HAMBRO (1'45.756)							
Lap	Seg.1	Seg.2	Seg.3	Seg.4	Lap Time	km/h	Local Time
1		33.398	28.655	30.136		191,2	12:07'24.023
2	23.636	29.685	26.677	27.932	1'47.930	208,1	12:09'11.953
3	<b>22.567</b>	29.347	26.607	28.381	1'46.902	214,4	12:10'58.855
4	22.724	28.822	26.820	28.204	1'46.570	<b>215,6</b>	12:12'45.425
5	22.816	29.582	26.592	28.167	1'47.157	<b>215,6</b>	12:14'32.582
6	23.192	29.123	26.661	34.365	1'53.341P	212,2	12:16'25.923
7	4'18.787	30.796	27.678	29.330	5'46.591P	203,4	12:22'12.514
8	30.180	35.171	28.583	30.132	2'04.066	191,2	12:24'16.580
9	23.290	29.190	26.760	28.534	1'47.774	209,0	12:26'04.354
10	23.188	29.658	26.980	28.088	1'47.914	203,1	12:27'52.268
11	22.782	<b>28.725</b>	<b>26.535</b>	<b>27.714</b>	<b>1'45.756</b>	211,8	12:29'38.024
12	22.644	29.682	26.633	28.464	1'47.423	208,5	12:31'25.447

38° 25 M. FLOWER (1'46.057)							
Lap	Seg.1	Seg.2	Seg.3	Seg.4	Lap Time	km/h	Local Time
1		32.253	28.188	29.427		211,0	12:07'16.502
2	23.291	29.968	26.437	27.545	1'47.241	227,0	12:09'03.743
3	22.875	29.930	<b>25.879</b>	<b>27.373</b>	<b>1'46.057</b>	<b>229,4</b>	12:10'49.800
4	23.173	29.706	26.224	27.468	1'46.571	217,8	12:12'36.371
5	<b>22.633</b>	29.608	26.503	27.643	1'46.387	223,7	12:14'22.758
6	22.867	<b>29.457</b>	26.381	27.620	1'46.325	221,9	12:16'09.083
7	22.874	29.946	26.386	29.242	1'48.448	219,6	12:17'57.531
8	23.476	29.701	26.405	41.604	2'01.186P	226,5	12:19'58.717
9	2'46.388	31.019	28.658	28.422	4'14.487CP	228,4	12:24'13.204
10	22.944	30.192	26.071	27.596	1'46.803	225,6	12:26'00.007
11	22.887	29.720	26.561	27.934	1'47.102	226,5	12:27'47.109
12	22.818	30.190	26.715	28.627	1'48.350	227,5	12:29'35.459
13	23.798	30.598	26.636	27.891	1'48.923	222,3	12:31'24.382

39° 87 D. FLETCHER (1'46.241)							
Lap	Seg.1	Seg.2	Seg.3	Seg.4	Lap Time	km/h	Local Time
1		31.873	27.178	29.474		219,6	12:07'06.027
2	23.709	30.525	26.586	29.538	1'50.358	<b>226,0</b>	12:08'56.385
3	23.296	29.940	26.583	28.174	1'47.993	222,3	12:10'44.378
4	22.972	30.014	27.626	29.941	1'50.553	221,4	12:12'34.931
5	23.112	29.656	27.387	28.539	1'48.694	217,4	12:14'23.625
6	22.918	29.954	26.666	<b>27.813</b>	1'47.351	218,7	12:16'10.976
7	23.035	30.688	26.519	27.875	1'48.117	216,5	12:17'59.093
8	22.783	29.510	26.602	28.021	1'46.916	218,7	12:19'46.009
9	22.922	29.440	26.486	27.944	1'46.792	212,2	12:21'32.801
10	<b>22.590</b>	30.414	26.669	28.180	1'47.853	216,1	12:23'20.654
11	23.222	30.348	26.854	37.859	1'58.283P	208,5	12:25'18.937
12	2'40.031	30.386	26.909	27.824	4'05.150P	215,2	12:29'24.087
13	22.800	<b>29.245</b>	<b>26.349</b>	27.847	<b>1'46.241</b>	218,7	12:31'10.328

40° 22 I. TUNE (1'46.901)							
Lap	Seg.1	Seg.2	Seg.3	Seg.4	Lap Time	km/h	Local Time
1		33.156	28.752	31.107		196,4	12:07'18.542
2	23.821	30.904	27.178	28.708	1'50.611	209,8	12:09'09.153
3	<b>22.818</b>	<b>29.354</b>	<b>26.338</b>	<b>28.391</b>	<b>1'46.901</b>	<b>220,0</b>	12:10'56.054
4	22.986	29.627	41.827	51.129	2'25.569CP	176,5	12:13'21.623
5	3'52.005	31.832	41.827	40.654	5'46.318CP	205,4	12:19'07.941

41° 34 C. WATKINS (1'47.025)							
Lap	Seg.1	Seg.2	Seg.3	Seg.4	Lap Time	km/h	Local Time
1		32.988	29.779	31.029		192,9	12:07'17.531
2	23.713	30.323	27.748	29.810	1'51.594	211,0	12:09'09.125
3	23.476	29.873	27.233	29.132	1'49.714	210,6	12:10'58.839
4	23.263	29.893	27.740	29.536	1'50.432	209,4	12:12'49.271
5	23.560	29.976	27.655	37.457	1'58.648P	208,1	12:14'47.919
6	5'17.921	31.343	28.945	30.384	6'48.593P	196,4	12:21'36.512
7	22.920	29.157	26.881	<b>28.721</b>	1'47.679	<b>211,8</b>	12:23'24.191
8	<b>22.832</b>	<b>28.829</b>	<b>26.619</b>	28.745	<b>1'47.025</b>	208,1	12:25'11.216
9	23.553	29.316	28.106	35.971	1'56.946P	207,3	12:27'08.162



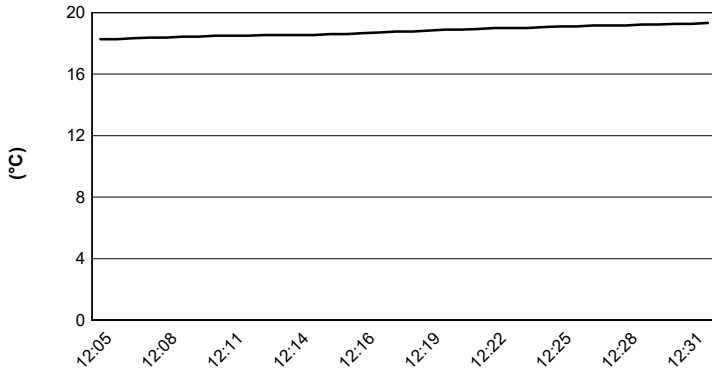
Donington Park 4.023 m

**Prosecco DOC UK Round, 2-4 July 2021**

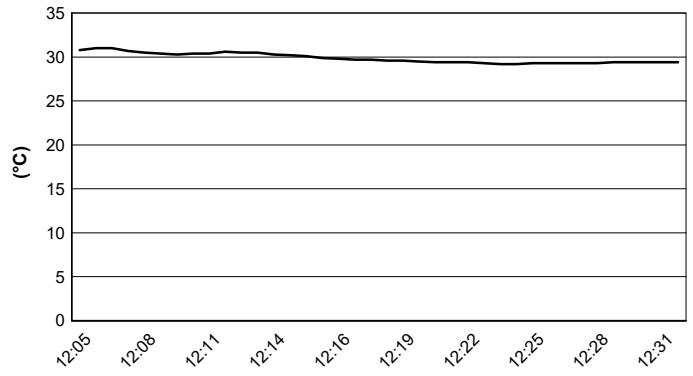
**Weather Report Free Practice**

Session started 12:05 - Session ended 12:32

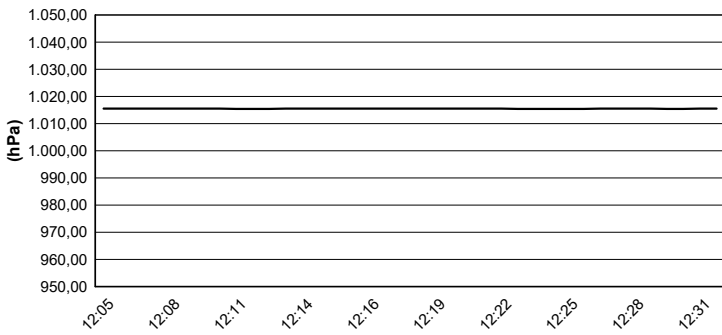
**Air Temperature**



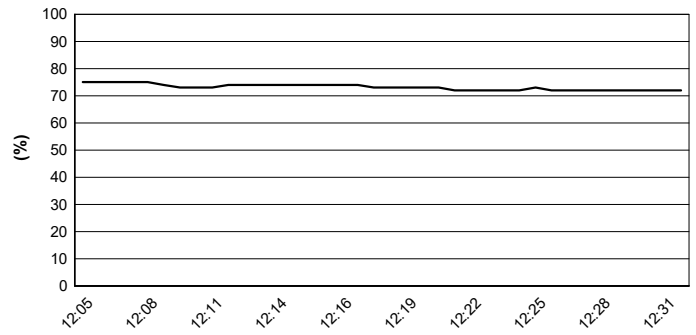
**Track Temperature**



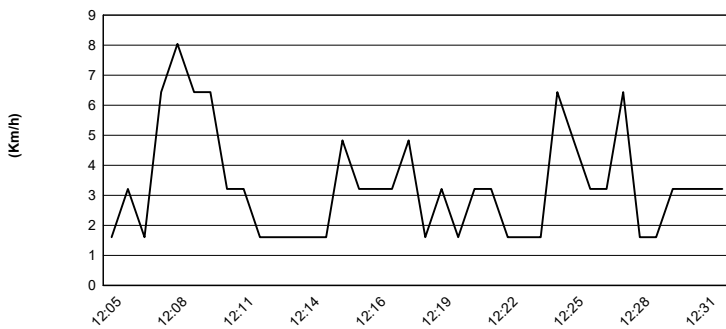
**Air Pressure**



**Humidity**



**Wind Speed**



**Wind Direction**

